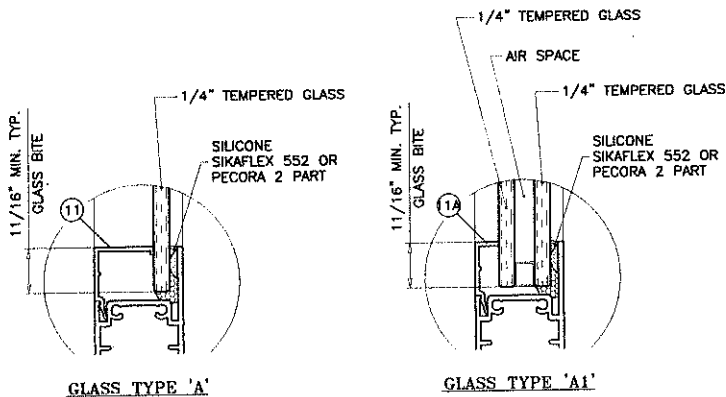




DESIGN LOAD CAPACITY - PSF GLASS TYPES 'A' OR 'A1'					
PANEL WIDTH NOMINAL	DOOR HEIGHT	ANCHORS TYPE 'A'		ANCHORS TYPE 'B'	
		EXT. (+)	INT. (-)	EXT. (+)	INT. (-)
30"	80"	70.0	134.1	70.0	141.8
33"		70.0	124.8	70.0	131.9
36"		70.0	117.2	70.0	123.9
39"		70.0	110.8	70.0	117.2
42"		70.0	105.5	70.0	111.6
45"		70.0	101.1	70.0	106.9
48"		70.0	97.3	70.0	102.9
51"		70.0	94.1	70.0	99.5
54"	70.0	91.4	70.0	96.6	
57"	70.0	89.1	70.0	94.2	
30"	96"	70.0	107.6	70.0	113.8
33"		70.0	99.7	70.0	105.4
36"		70.0	93.1	70.0	98.5
39"		70.0	87.7	70.0	92.7
42"		70.0	83.0	70.0	87.8
45"		70.0	79.1	70.0	83.6
48"		70.0	75.7	70.0	80.0
51"		70.0	72.8	70.0	76.5
30"	108"	70.0	83.6	70.0	83.6
33"		67.0	76.5	67.0	76.5
36"		61.8	70.7	61.8	70.7
39"		57.5	65.7	57.5	65.7
42"		53.9	61.6	53.9	61.6

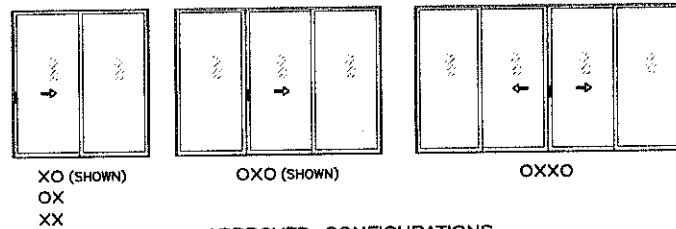
ALL EXTERIOR(+) LOADS SHOWN ON THIS SHEET ARE FOR DOORS USING 3-1/4" SILL HEIGHTS. FOR DOORS USING 2-1/2" SILL HEIGHTS LIMIT EXT.(+) LOADS TO 50.0 PSF.

ITEM #	PART #	QUANTITY	DESCRIPTION	MATERIAL	MANF./SUPPLIER/REMARKS
1	KCO-295	1	FRAME HEAD	6063-T6	-
2	KCO-317	1	FRAME SILL (2-1/2" LEG)	6063-T6	-
2A	KCO-318	1	FRAME SILL (3-1/4" LEG)	6063-T6	-
3	KCO-304	1	FRAME JAMB	6063-T6	-
4	KCO-313	1/ PANEL	TOP RAIL	6063-T6	-
5	-	-	-	-	-
6	KCO-312	1/ PANEL	BOTTOM RAIL	6063-T6	-
7	KCO-302	AS REQD.	LOCK STILE	6063-T6	-
8	KCO-305	AS REQD.	INNER INTERLOCK	6063-T6	-
9	KCO-308	AS REQD.	OUTER INTERLOCK	6063-T6	-
10	KCO-310	AS REQD.	ASTRAGAL STILE	6063-T6	-
11	RP-920	AS REQD.	GLASS STOP (MONOLITHIC GLASS)	RIGID PVC	-
11A	-	AS REQD.	GLASS STOP (INSUL. GLASS)	RIGID PVC	-
12	KCO-303	AS REQD.	INNER INTERLOCK STIFFENER	6063-T6	-
13	KCO-306	AS REQD.	OUTER INTERLOCK STIFFENER	6063-T6	-
14	KCO-300	AS REQD.	ASTRAGAL STIFFENER	6063-T6	-
16	KCO-309	AS REQD.	HEAD/SILL RETAINING CLIP	6063-T6	6" LONG
17	KCO-020	2/ FIX. PANEL	FIX. PANEL SKATE	DELTRIN	2-1/2" LONG
18	KCO-019	4/ PANEL	PANEL TOP GUIDE	DELTRIN	AT TOP RAIL CORNERS
19	KCO-319	1/ FIX. PANEL	FIX. PANEL CLIP	6063-T6	FULL LENGTH
19A	-	1/ FIX. PANEL	ALT. FIX. PANEL CLIP	6063-T6	FULL LENGTH
20	-	-	-	-	-
21	-	AS REQD.	PILE WITH FIN W'STRIPPING	-	.380" X .187"
22	-	2/ PANEL	BOTTOM RAIL W'STRIPPING	VNYL	.030" X .700"
23	#10 X 1"	8/ PANEL	PANEL ASSY SCREWS	-	PH SMS
25	-	-	-	-	-
26	-	2/ MOV. PANEL	ROLLER ASSEMBLY	-	-
27	-	-	LATCH ASSEMBLY	-	(2) AT ASTRAGAL, (1) AT FRAME JAMB
28	-	1/ LOCK	KEEPER	-	-
30	-	-	-	-	-
31	-	AS REQD.	SELF ADHESIVE PILE PAD	WOOL	AT HEAD AND SILL



GLAZING OPTIONS

NOTE: GLASS CAPACITIES ON THIS SHEET ARE BASED ON ASTM E1300-02/04 (3 SEC. GUSTS) AND FLORIDA BUILDING COMMISSION DECLARATORY STATEMENT DCA05-DEC-219



APPROVED CONFIGURATIONS

TWO TRACK FRAME DOOR CONFIGURATIONS OF MORE THAN FOUR PANELS USING STILE COMBINATIONS SHOWN IN THESE DETAILS MAY ALSO BE APPROVED (EXAMPLE OXXXO).

Eng: DR. HUMAYOUN FAROOQ  
STRUCTURES  
FLA. PE # 105257  
C.A.N. 3538

NOV 11 2008

**AL-FAROOQ CORPORATION**  
ENGINEERS & PRODUCT DEVELOPMENT  
1235 S.W. 87 AVE  
MIAMI, FLORIDA 33174  
TEL. (305) 264-8100 FAX. (305) 262-6878  
COMP-ANL W08-88AFC

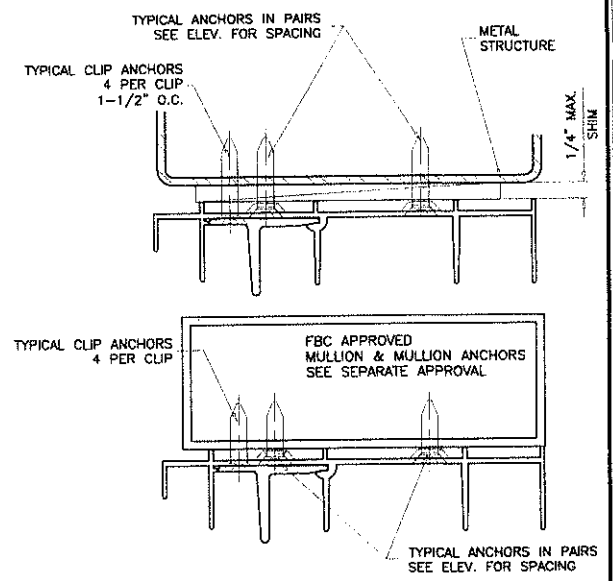
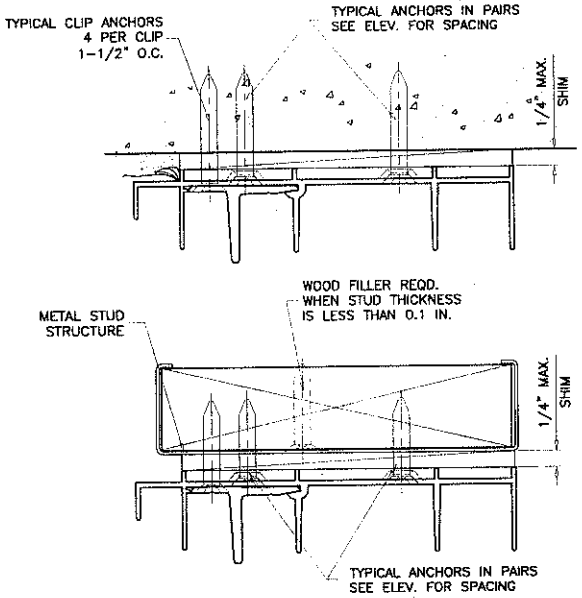
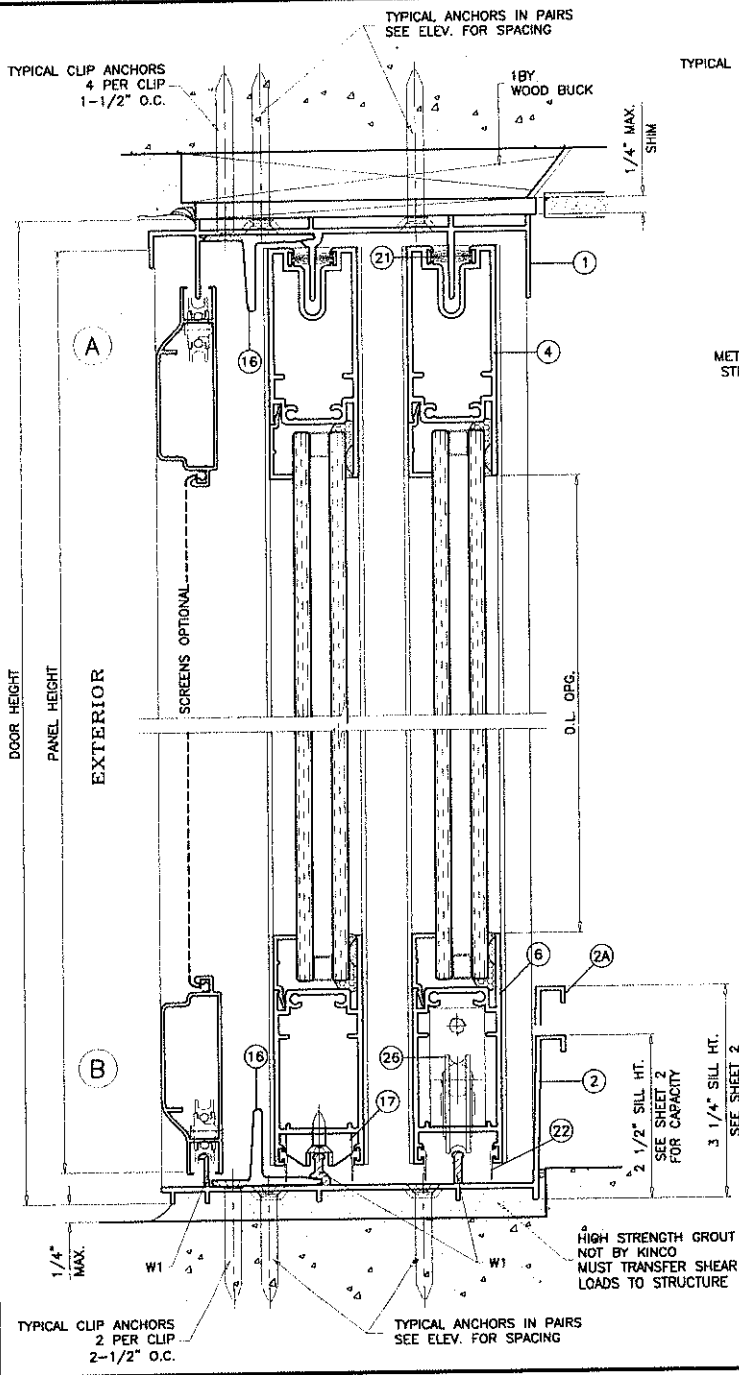
**ATRUM**  
COMPANIES, INC.

Series-LCSGD ALUM SLIDING GLASS DOOR (N.I.)

Revisions:  
no. date by description

date: 10-29-08  
scale: 1/2" = 1"  
by: HAMID  
chk. by:

drawing no. **W08-88**  
sheet 2 of 6



WOOD BUCKS, METAL STUDS AND METAL STRUCTURE NOT BY ATRIUM MUST SUSTAIN LOADS IMPOSED BY GLAZING SYSTEM AND TRANSFER THEM TO THE BUILDING STRUCTURE.

**TYPICAL ANCHORS:** SEE ELEV. FOR SPACING

**ANCHORS TYPE 'A'**

**1/4" TAPCONS**  
 INTO 2BY WOOD BUCKS OR WOOD STRUCTURES  
 1-3/8" MIN. PENETRATION INTO WOOD  
 THRU 1BY BUCKS INTO CONC. OR MASONRY  
 1-1/4" MIN. EMBED INTO CONC. OR MASONRY  
 DIRECTLY INTO CONC. OR MASONRY  
 1-1/2" MIN. EMBED INTO CONC. OR MASONRY

**ANCHORS TYPE 'B'**

**1/4" DIA. ULTRACON BY 'ELCO'** (Fu=177 KSI, Fy=155 KSI)  
 INTO 2BY WOOD BUCKS OR WOOD STRUCTURES  
 1-3/8" MIN. PENETRATION INTO WOOD  
 THRU 1BY BUCKS INTO CONC. OR MASONRY  
 1-1/4" MIN. EMBED INTO CONC. OR MASONRY  
 DIRECTLY INTO CONC. OR MASONRY  
 1-1/4" MIN. EMBED INTO CONC. OR MASONRY

**#14 SMS OR SELF DRILLING SCREWS** (GRADE 2 CRS)  
 INTO METAL STRUCTURES  
 STEEL : 12 GA. MIN. (Fy = 36 KSI MIN.)  
 ALUMINUM : 1/8" THK. MIN. (6063-T5 MIN.)  
 (STEEL IN CONTACT WITH ALUMINUM TO BE PLATED OR PAINTED)

**#10 SMS OR SELF DRILLING SCREWS**  
 INTO FBC APPROVED MULLIONS (MIN. THK. = .090")  
 (NO SHIM SPACE)

**SEALANT:**

ALL JOINTS AND FRAME CONNECTIONS SEALED WITH WHITE/ALUMINUM COLORED SEALANT.

**WEEPHOLES:**

W1 = 2-5/8" WEEP NOTCH AT EACH END

**TYPICAL EDGE DISTANCE**

INTO CONCRETE AND MASONRY = 3" MIN.  
 INTO WOOD STRUCTURE = 1" MIN.  
 INTO METAL STRUCTURE = 3/4" MIN.

CONCRETE f'c = 3000 PSI MIN.  
 MASONRY f'm = 1500 PSI MIN.

Engr. DR. HUMAYOUN FAROOQ  
 STRUCTURES  
 FLA. PE # 18557  
 C.A.N. 353P

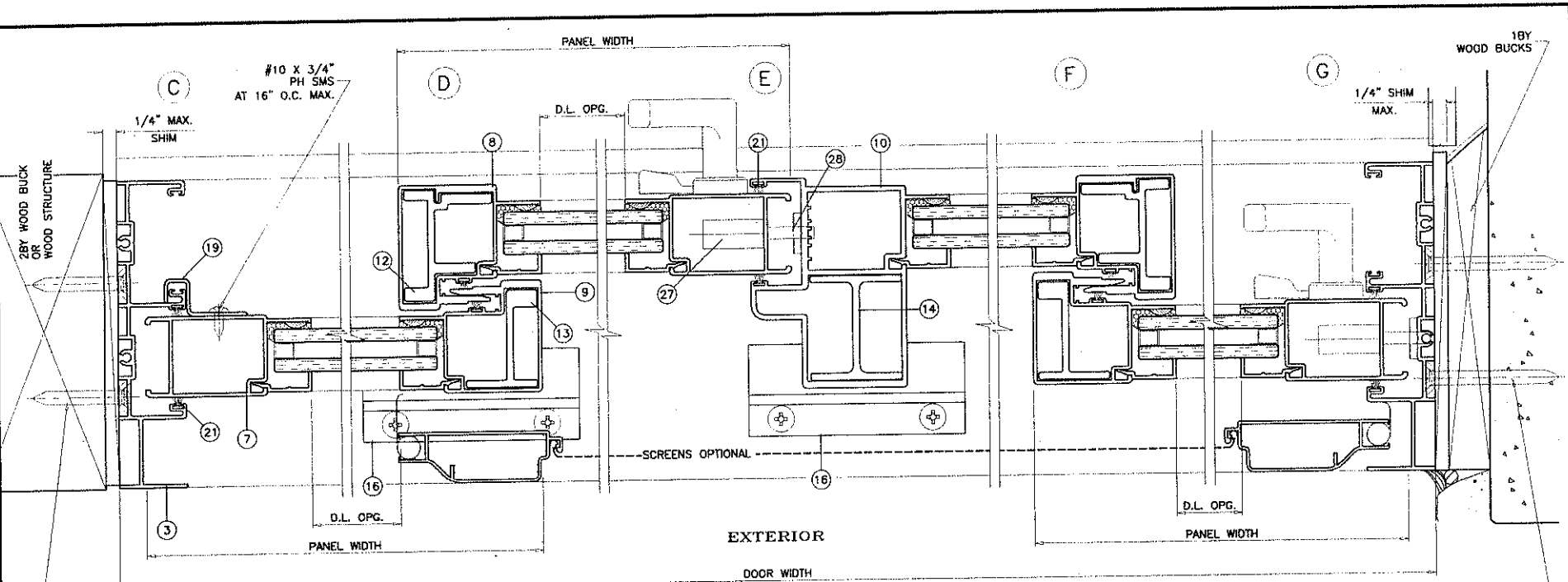
NOV 11 2008

**af c**  
**AL-FAROOQ CORPORATION**  
 ENGINEERS & PRODUCT DEVELOPMENT  
 4235 S.W. 87 AVE  
 MIAMI, FLORIDA 33174  
 TEL. (305) 264-8200 FAX. (305) 262-6978  
 COMP-ANL WOB-88A1F

Series-LCSGD ALUM SLIDING GLASS DOOR (N.I.)  
**ATRIUM**  
 COMPANIES, INC.

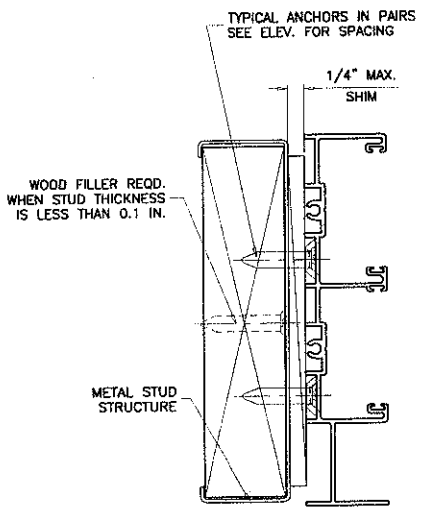
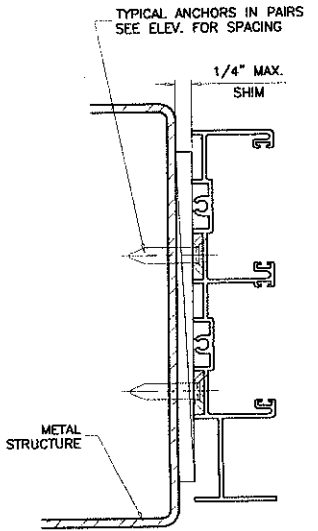
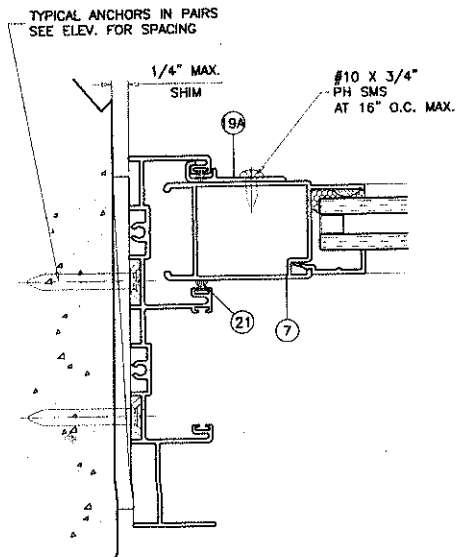
date	revision	by	description
10-29-08	1	dr. by HAMID	

drawing no. **W08-88**  
 sheet 3 of 6



TYPICAL ANCHORS IN PAIRS  
SEE ELEV. FOR SPACING

TYPICAL ANCHORS IN PAIRS  
SEE ELEV. FOR SPACING



**af c**

**AL-FAROOQ CORPORATION**  
ENGINEERS & PRODUCT DEVELOPMENT  
1235 S.W. 87 AVE  
MIAMI, FLORIDA 33174  
TEL. (305) 264-8100 FAX. (305) 262-6978  
COMP-ANI W08-88A1

SERIES-LCSGD ALUM SLIDING GLASS DOOR (N.I.)

**ATRIUM**  
COMPANIES, INC.

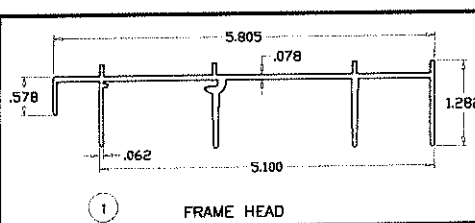
revisions:	no	date	by	description

Engr: DR. HUMAYOUN FAROOQ  
STRUCTURES  
FLA. PE # 16557  
C.A.N. 3538

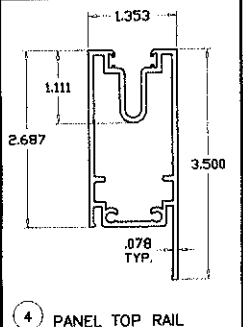
NOV 11 2008

date 10-29-08  
scale 1/2" = 1"  
dr. by: HAMD  
chk. by:

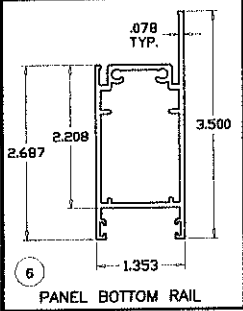
drawing no.  
**W08-88**  
sheet 4 of 6



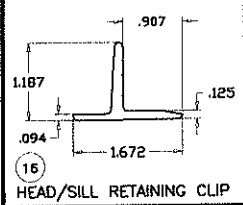
1 FRAME HEAD



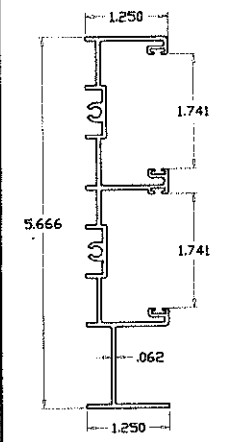
4 PANEL TOP RAIL



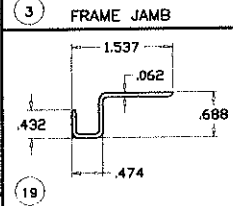
6 PANEL BOTTOM RAIL



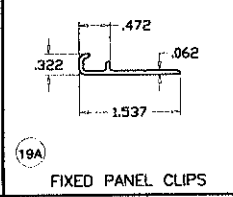
16 HEAD/SILL RETAINING CLIP



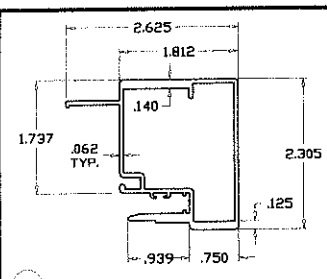
3 FRAME JAMB



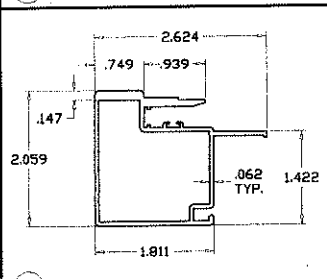
19 FIXED PANEL CLIPS



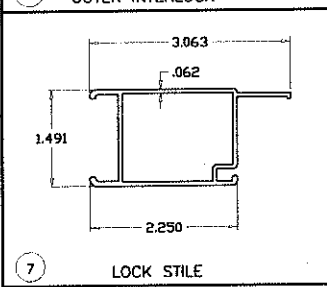
19A



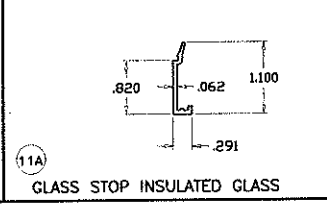
8 INNER INTERLOCK



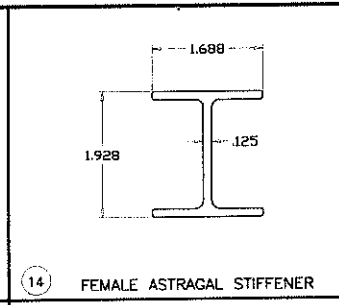
9 OUTER INTERLOCK



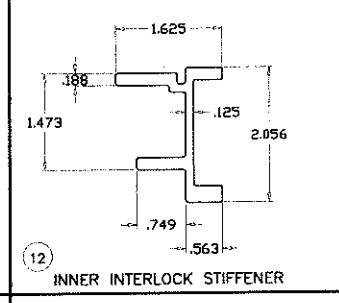
7 LOCK STILE



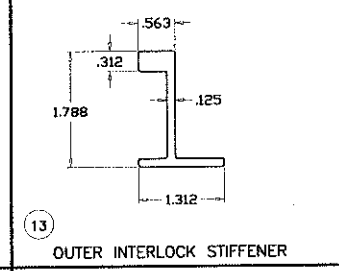
11A GLASS STOP INSULATED GLASS



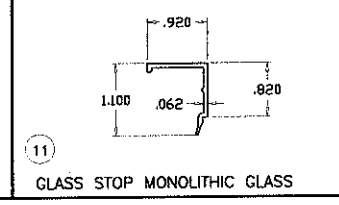
14 FEMALE ASTRAGAL STIFFENER



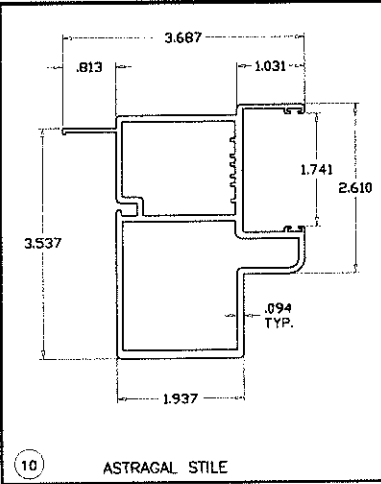
12 INNER INTERLOCK STIFFENER



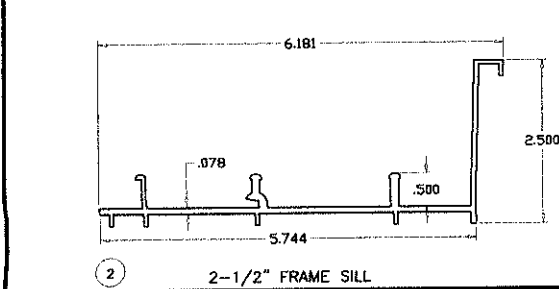
13 OUTER INTERLOCK STIFFENER



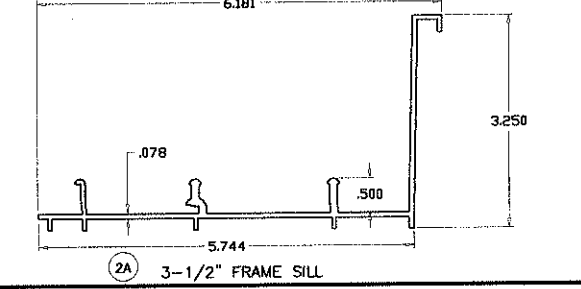
11 GLASS STOP MONOLITHIC GLASS



10 ASTRAGAL STILE



2 2-1/2" FRAME SILL



2A 3-1/2" FRAME SILL

**AL-FAROQ CORPORATION**  
 ENGINEERS & PRODUCT DEVELOPMENT  
 1235 S.W. 87 AVE  
 MIAMI, FLORIDA 33174  
 TEL. (305) 264-8100 FAX. (305) 262-6978  
 COMP-ANL WOB-88AFL

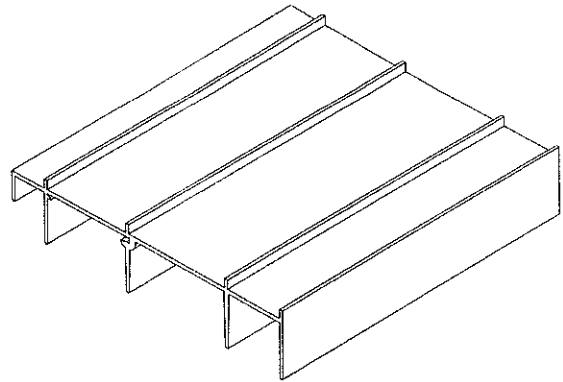
SERIES-LOSDD ALUM SLIDING GLASS DOOR (N.I.)  
**ATRUM**  
 COMPANIES, INC.

Revisions:	no.	date	by description

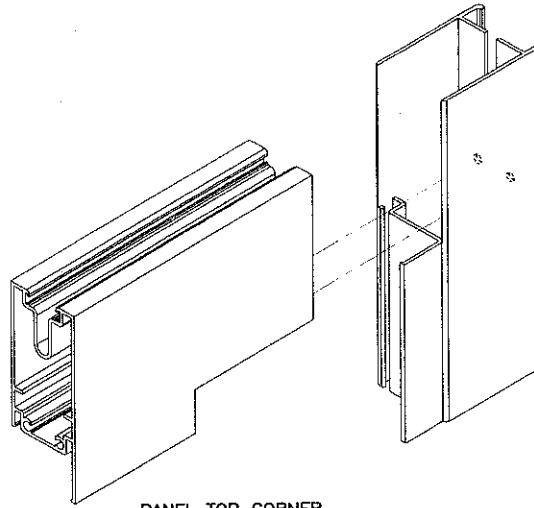
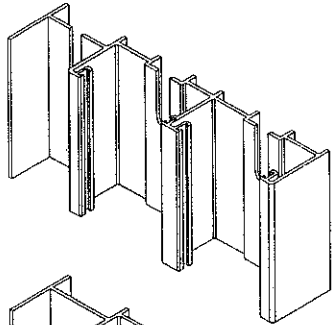
Engr: DR. FUMAYOUN FAROOQ  
 STRUCTURES  
 FLA. PE # 16557  
 C.A.N. 3533

NOV 11 2008

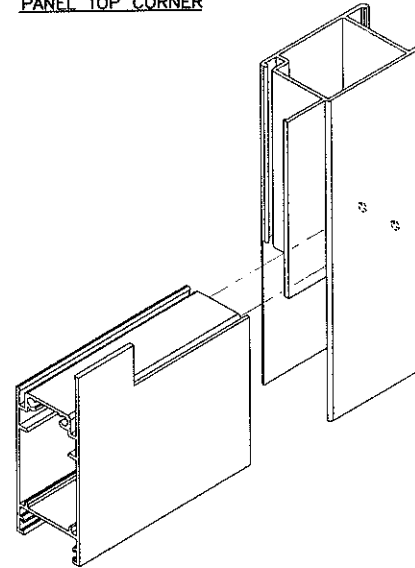
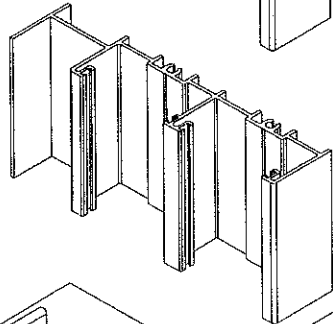
date: 10-29-08  
 scale: 1/2" = 1"  
 dr. by: HAMD  
 chk. by:  
 drawing no.  
**W08-88**  
 sheet 5 of 6



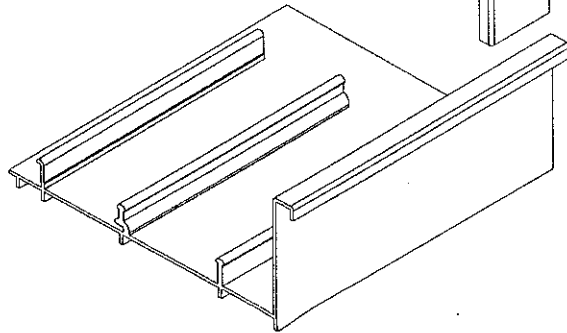
FRAME\_TOP\_CORNER



PANEL\_TOP\_CORNER



PANEL\_BOTTOM\_CORNER



FRAME\_BOTTOM\_CORNER

**a f c**

**AL-FAROOQ CORPORATION**  
 ENGINEERS & PRODUCT DEVELOPMENT  
 1235 S.W. 87 AVE  
 MIAMI, FLORIDA 33174  
 TEL. (305) 264-8100 FAX. (305) 262-6978  
 COMP-ANL W08-88AFT

SERIES-LCSGD ALUM SLIDING CLASS DOOR (N.I.)  
**ATRUM**  
 COMPANIES, INC.

revisions:	no	date	by	description

Engr: DR. HUMAYOON FAROOQ  
 STRUCTURES  
 FLA. PE # 16557  
 C.A.N. 3538

date: 10-29-08  
 scale: 1/2" = 1"  
 dr. by: HAMID  
 chk. by:

NOV 1 2008

drawing no.  
**W08-88**  
 sheet 6 of 6